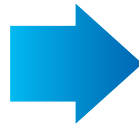

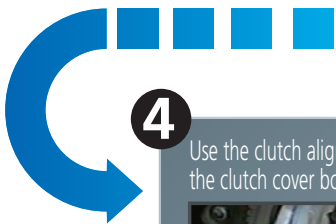
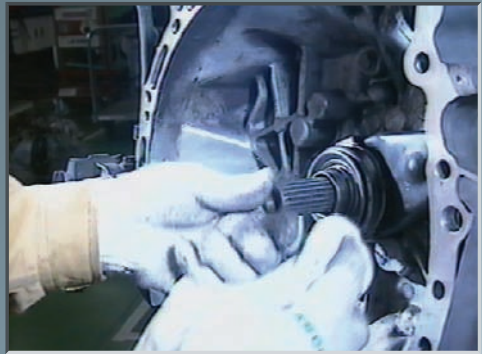


5 Installation Procedure

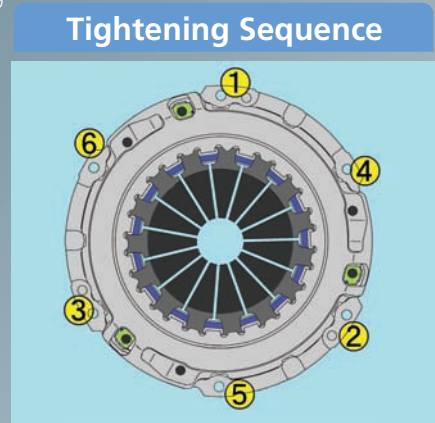
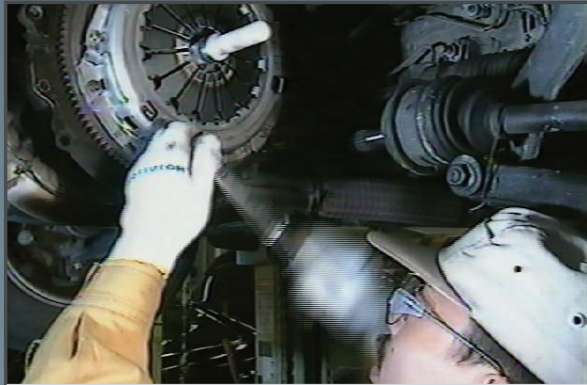
1 Use caution in the disassembly of the transmission and clutch components from the engine.



2 Clean the Input Shaft.



4 Use the clutch alignment tool to locate the clutch disc with the input bearing while tightening the clutch cover bolts. Tighten bolts with torque wrench in a diagonal (star) pattern.

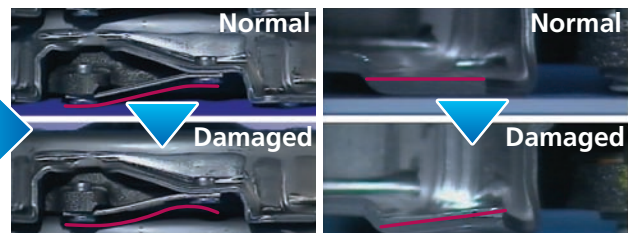


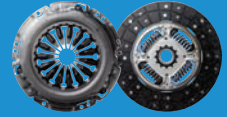
Operation Precautions

Do not drop clutch components.



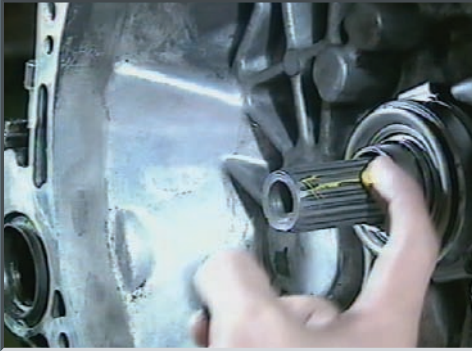
Deformation of the strap or cover will cause failure of the clutch.





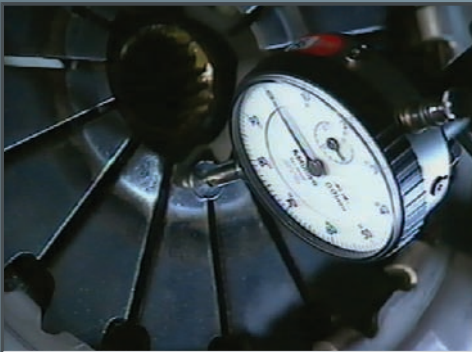
3

Apply appropriate amount of grease on the input shaft and disc spline.



5

Confirm evenness of the diaphragm springs (within 0.5mm or 0.02inch).



**Align the input shaft
correctly with the clutch disc.**

Incorrect installation will cause problems
such as damage to the clutch disc.

— Key Points for Preventing Failure —

1. Refer to instructions and specifications in the Manufacturer's Service Manual.
2. Do not force or drop parts.

***Always follow instructions
to prevent clutch failure.***