

# Is your car's transmission "healthy"?

## Have you ever changed transmission fluid for your car?

Specialist recommends

Change every 2 year or 20,000km

**ATF** Automatic Transmission Fluid



## AISIN ATF Oil Reference Chart

| Automaker  | Vehicle Type   | Specified Genuine ATF               | AFW AFW+ | CFEx CFB |
|------------|--|-------------------------------------|----------|----------|
| TOYOTA     | FF-based 4WD vehicles  | Auto fluid type T                   | ●        | ×        |
|            | Used for 3000 cc or bigger   | Auto fluid T-II                     | ●        | ×        |
|            | Flex lock up vehicles  | Auto fluid T-III                    | ●        | ×        |
|            | Used for both 3000 cc or more and flex lockup vehicles Type T-II and T-III were integrated | Auto fluid type IV                  | ●        | ×        |
|            | Super CVT  | CVT fluid TC                        | ×        | ●        |
|            | Super CVT  | CVT fluid FE                        | ×        | ●        |
|            | Toyota vehicles other than those above   | Auto fluid DEXRON II-E              | ●        | ×        |
|            | Cavalier, Duet   | Auto fluid DEXRON III               | ●        | ×        |
|            | Celsior, Crown(6AT), Land cruiser 100(5AT), prius  | Auto fluid WS                       | ●        | ×        |
|            | General AT truck and Bus (Under 4t)  | Auto fluid DEXRON-II/T-IV           | ●        | ×        |
| Nissan     | General AT vehicles  | Matic Fluid D *1                    | ×        | ×        |
|            | N-CVTvehicles(RE0F05A) March, Cube   | Matic Fluid D *1                    | ×        | ●        |
|            | X-Trail, Cima, Skyline 5AT, Fairlady Z   | Matic Fluid J                       | ●        | ×        |
|            | Oct, 2007 ~ Skyline coupe, El Grand, Fuga 5AT  | Matic Fluid S                       | ●        | ×        |
|            | Hyper CVT vehicles (RE0F21A) March, cube   | CVT fluid NS-1                      | ×        | ●        |
|            | Extronic CVT vehicles (RE0F08A/09A/10A)  | CVT fluid NS-2                      | ×        | ●        |
|            | Hyper CVT vehicles (RE0F06A, RE0F06AV)   | CVT fluid NS-1                      | ×        | ●        |
|            | Extroid CVT, Extroid CVT-M6(RE0R04A)   | CVT fluid KTF-1                     | ×        | ×        |
|            | Dec, 2007 ~ GT-R(6AT)  | mission oil R35 Special             | ×        | ×        |
|            | Vaette   | Matic Fluid C, D/ATF M-III          | ●        | ×        |
| UD         | General AT truck and Bus (Under 4t)  | Besco ATF III                       | ●        | ×        |
| HINO       | General AT truck and Bus (Under 4t)  | Besco ATF III                       | ●        | ×        |
| MAZDA      | General AT truck and Bus (Under 4t)  | Auto fluid DEXRON II/T-IV           | ●        | ×        |
|            | General AT vehicles ATF S-1 and N-1 have been integrated into M-III.                       | ATF M-III                           | ●        | ×        |
|            | Roadstar (6AT)   | ATF JWS 3317                        | ●        | ×        |
|            | Demio, Axela(CVT)  | Mobile CVTF 3320                    | ×        | ●        |
|            | Premacy, Atenza, Demio, MPV, Axela   | ATF M-V                             | ●        | ×        |
|            | Tribute  | ATF F-1                             | ●        | ×        |
|            | General trucks and bus under 4t  | Besco ATF III                       | ●        | ×        |
|            | July, 2007 ~ Demio, Axela  | Mobile CVTF 3320                    | ×        | ●        |
|            | General AT vehicle   | Subaru ATF, Subaru ATF (SAT)        | ●        | ×        |
|            | ECVT Fluid *1  | ECVT Fluid *1                       | ●        | ×        |
| SUBARU     | Samber, Justy, Domingo, Rex, Vivio, Pleo, R1, R2(ECVT/I-CVT)                               | ECVT Fluid/I-CVT Fluid              | ×        | ●        |
|            | Stella(I-CVT)  | Subaru I-CVT/I-CVT-FG               | ×        | ●        |
|            | Traviq   | opel original ATF 09117946          | ●        | ×        |
|            | General AT vehicles  | ATF DEXRON II E                     | ●        | ×        |
|            | Escudo, Alto, Cervo, Carry, Jimmy, Wagon R, X-90(3AT)                                      | ATF S006                            | ●        | ×        |
|            | SCVT vehicles (Cultus Convertible)   | SCVT fluid                          | ×        | ●        |
|            | Cultus Crescent G (CVT)  | Suzuki CVT oil                      | ×        | ●        |
|            | Escudo, Cultus, Alto, Wagon R  | ATF 2384K                           | ●        | ×        |
|            | Electronic control 4AT   | ATF 3314/3317                       | ●        | ×        |
|            | New CVT(Wagon R RX/FX, Alto SC Lean-burn, L'epo Lean-burn)                                 | Use gear oil                        | ×        | ×        |
| SUZUKI     | Nov, 2006 ~ Wagon R (CVT)  | Suzuki CVT fluid green 1/green 1V   | ×        | ●        |
|            | May, 2007 ~ Swift(CVT)   | Suzuki CVT fluid 3320               | ×        | ●        |
|            | Dry fiber belt CVT   | Gear oil                            | ×        | ×        |
|            | General AT vehicles  | Besco ATF II/III                    | ●        | ×        |
|            | NAVI-5   | Besco DEXRONII-E                    | ●        | ×        |
|            | General small bus & truck (under 4t)   | Besco NAVI-5                        | ×        | ×        |
|            | FF vehicles and passenger car base FR vehicles (other than CVT)                            | Dia Queen ATF SP II/SP II M/ SP III | ●        | ×        |
|            | INVECS-III CVT   | Dia Queen ATF SP III *1             | ×        | ●        |
|            | ALL FR cars which are AT   | Dia Queen ATF SP III *1             | ●        | ×        |
|            | Pajero io (non-turbo)  | Dia Queen ATF II *1                 | ●        | ×        |
| Mitsubishi | Pajero io (turbo)  | Dia Queen ATF AW                    | ●        | ×        |
|            | Outlander (6AT)  | Dia Queen ATF J2                    | ●        | ×        |
|            | Outlander (CVT)  | Dia Queen CVT Fluid-J1              | ×        | ●        |
|            | Delica Van, Truck  | Dia Queen ATF SK                    | ●        | ×        |
|            | Lancer EvolutionX(6AMT)  | Dia Queen S5TF-1                    | ×        | ×        |
|            | General AT vehicles (including S-Matic, F-Matic, 5AT)                                      | Honda Ultra ATF/ATF-21              | ●        | ×        |
|            | General AT vehicles  | Honda Ultra ATF DW1                 | ●        | ×        |
|            | Multimatic(CVT)  | Honda Ultra ATF/ATF-21/HMMF         | ×        | ×        |
|            | General AT vehicles  | Honda Ultra ATF-21                  | ●        | ×        |
|            | Torque converter CVT vehicle   | Honda Ultra ATF/ATF-21/HMMF         | ×        | ×        |
| Honda      | 13M Step Wagon   | Honda Ultra HCF-2                   | ×        | ×        |
|            | General AT vehicle   | Ammix ATF DIII Multi                | ●        | ×        |
|            | General AT vehicles  | Ammix ATF D3-SP                     | ●        | ×        |
|            | Eco CVT  | Use gear oil                        | ×        | ×        |
|            | Sonica, Mira, Move(CVT from 2006)  | Ammix CVT fluid-DC                  | ×        | ●        |
|            | Kacil, Viva, Kelisa, Kenari, Kembara   | ATD DIII                            | ●        | ×        |
|            | Myvi, New Myvi, Nautica, Alza  | P2-ATF D3 - SP                      | ●        | ×        |
|            | General AT vehicle   | Ammix ATF DIII Multi                | ●        | ×        |
|            | General AT vehicles  | Ammix ATF D3-SP                     | ●        | ×        |
|            | Eco CVT  | Use gear oil                        | ×        | ×        |
| DAIHATU    | General AT vehicle   | Ammix ATF DIII Multi                | ●        | ×        |
| PERODUA    | General AT vehicle   | Ammix ATF DIII Multi                | ●        | ×        |

## From the world renowned transmission manufacturer

- Smooth Starts under the coldest conditions: Eliminates engagement delay at low temperatures with superior low temperature flow characteristics.
- Improved shift feel: Optimum friction properties deliver seamless gear changes without harsh shift shock.
- Responsive starts and increased performance: Optimum friction properties reduce power loss, increase response, and ensure reliability.

## Unique of Aisin ATF

### Who is AISIN?

Aisin Seiki was founded in 1949, Aisin is a Fortune Global 500 company. Automatic Transmission, one of Aisin's main product, has been widely used by more than 40 carmakers around the world. One of every five A/T vehicles uses Aisin's Automatic Transmission. Aisin is the world largest A/T supplier. Amongst makers who has the capability to design and manufacture A/T, as well as high quality ATF, AISIN is one of the best company. AISIN product quality is superior than of OEM products.

### ATF Knowledge:

Ever since the development of A/T, the electronic and hydraulic components has become more complicated. Therefore it is very important to service A/T regularly. In general, carmakers suggest changing ATF every 60-80k KM, some carmakers even suggest for lifetime maintenance free. This suggestion has to be viewed from many aspects. With the higher quality living standards and deteriorating traffic condition, AISIN suggests car owners to change ATF every 2 years or 20000km. Without proper maintenance for the ATF, it will reduce your car performance, higher fuel consumption, or causing damage to the transmission.

### Advantageous of regular ATF maintenance:



ATF under normal usage

New Oil : Red Color



Safety

Oil after 20,000km : darken



Need to change

### ATF under excessive usage

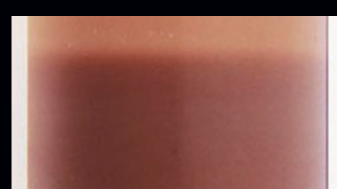
©TORUKON KIKI CO.,LTD.



Mixed with debris  
Need to repair transmission  
(metal debris will cause abrasion)



High temperature (paste-like)  
Need to repair transmission  
(will cause wet clutch slip)

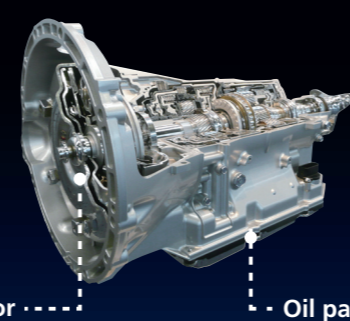


Milky (mixed with water)  
Need to repair transmission  
(water mixed into transmission)

Change ATF every 2 years or 20000km can well keep your transmission and prevent major repair. Hence it will help car owner to save time and money.

### ATF replacement standard

ATF replacement is different from engine oil replacement. By draining, only 2 liters of old oil will be drained out. Balance oil remain in torque converter and oil pan. ATF is not fully replaced.



Torque converter

Oil pan

AISIN provide special equipment for changing ATF. By using hydraulic pressure, old oil will be pumped out and replaced by new oil. It makes the car return to its new car condition and travel smoothly.

Aisin recommends ATF replacement equipment



©TORUKON KIKI CO.,LTD.